

## TIPS FOR MEASURING RING SIZE

### MEASURING YOUR FINGER

**Your ring should fit your finger comfortably;** snug enough so that it will not fall off, but loose enough to slide over your knuckle.

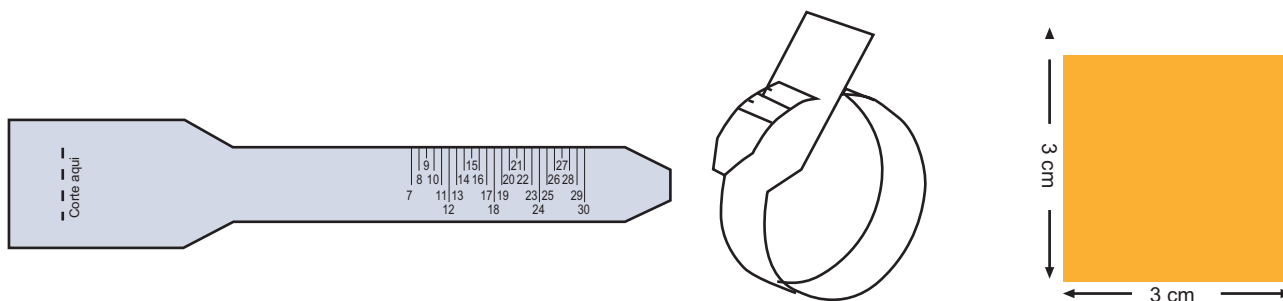
**Finger size changes** depending on the time of day and the weather. For best results measure your finger size:

1. At the end of the day and when your fingers are warm (Fingers are smaller in the early morning and when cold.)
2. Measure finger size 3 to 4 times to eliminate an erroneous reading.

**Avoid using string** to measure ring size as these materials can stretch or twist, yielding an inaccurate measurement.

### Use the Ring Sizer

Trim the following Ring Sizer by the edge and cut the dotted line "cut here". Insert your hand through the Ring Sizer and pull until you feel comfortable. The number in centimeters aligned with the edges is the size of your wrist.



If the square does not measure 3x3cm, the Ring Sizer has been printed wrong.  
Reprint the sheet and ensure that Page Scaling is NONE.

### TIPS FOR BUYING THE RING AS A SURPRISE

Ask your significant other's friends or mother if they know her finger size.

Borrow one of your significant other's rings (from the correct finger) and use the ring measurements provided to determine its size.